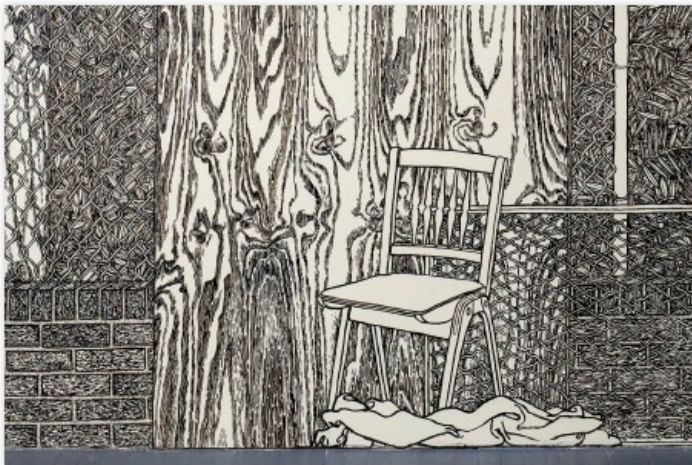


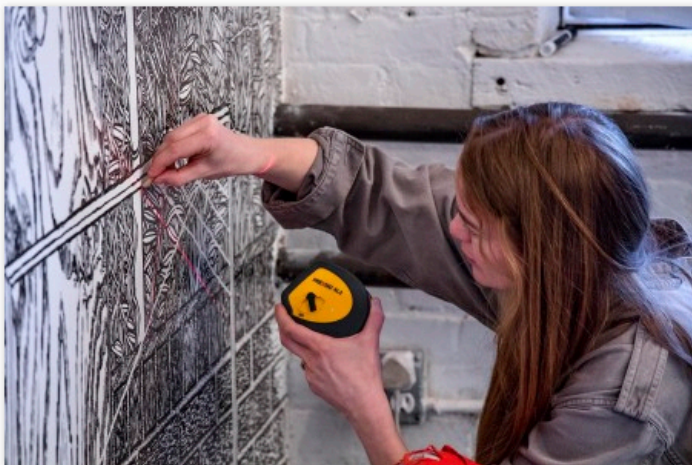
Wolf-Gordon Commissions Artist Charlotte Mann to Create Site-Specific Installation

By Hayley Arsenault on March 7th, 2016 in [Uncategorized](#)

A large-scale, monochrome drawing by British artist Charlotte Mann lines the walls the Gowanus Souvenir Shop in Brooklyn. Commissioned by American design company Wolf-Gordon, the site-specific installation, titled "Erasing is Leaving a Mark," is rendered entirely on their dry-erase coating Wink.



With a background in the fashion industry, Mann is known for installations that have been included in New York and London Fashion weeks, as well as exhibited at the Design Museum in Copenhagen and the Victoria and Albert Museum in London.



Following in the footsteps of Wolf-Gordon's previous art and design product collaborations, which have featured Christine Tarkowski, Hector Guimard, and Michael Graves, Mann's work explores the key characteristics of the erasable finish product while challenging the artistic approach altogether.



"Erasing is definitely just as important as making a mark, it is leaving a mark. That act of removal is utterly active. It is not a backwards step, but rather a change," said Mann. "To distinguish between creating and erasing in a hierarchical way curtails the possibilities for invention and discovery."

Unveiled at the opening reception held on March 1, "Erasing is Leaving a Mark" will remain on view through March 13.

