

Wolf Gordon 



V STARR

The Muse Collection

The Muse Collection by V Starr for Wolf-Gordon is a celebration of the power of women as told by the South Florida design firm's founder and tennis champion, Venus Williams.

The collection's three patterns juxtapose softness classically associated with femininity to fierce underlying qualities of perseverance, strength, and commitment. *Elena*, *Frida*, and *Ora* are named for historical and contemporary individuals who the V Starr team admires. In a nod to unity and camaraderie among women worldwide, each of the collection's color names include the pronouns *us*, *we*, or *her*.

Ora

This twisting helix motif conjures references to DNA, the flow of water and energy, and graceful female movement. For Ora, V Starr picked up on several of the Frida and Elena hues to ensure a cohesive color line across Muse, while adding a contemporary gradient approach in its seven colorways.



77% post-consumer recycled polyester, 23% Nylon
Bleach cleanable
54" wide
Stain resistant finish
Repeat: 13.5" H x 20.5" V
Available in 7 colorways



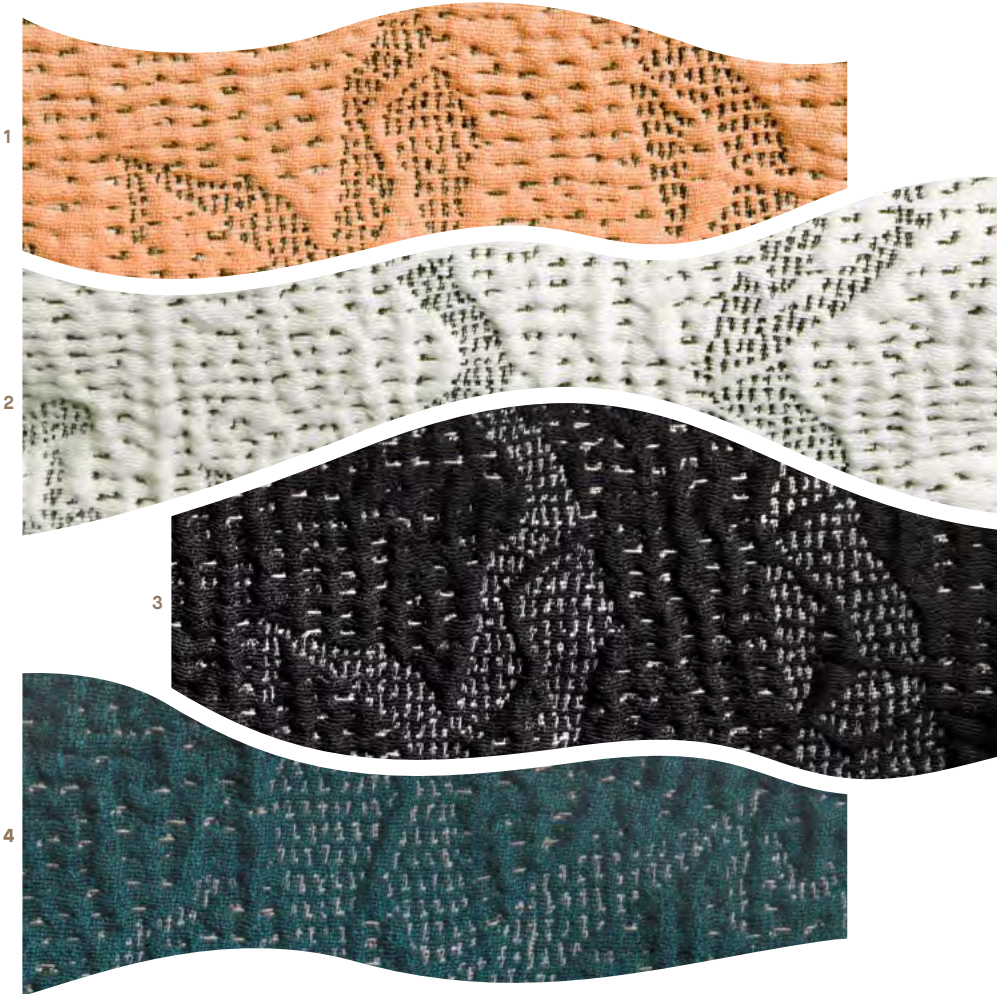
1. Sunflower, ORA 6602
2. Rust, ORA 6605
3. Slipper, ORA 6601
4. Oyster, ORA 6600
5. Seaweed, ORA 6606
6. Heather, ORA 6603
7. Sapphiher, ORA 6604



Pillow (Top): Heather, ORA 6603 / Pillow (Bottom): Oyster, ORA 6600

Elena

The figurative feature of the collection, Elena is a matelassé textile inspired by movement and dance. Horizontal and vertical stitches create its quilted quality as stylized female figures, representing interconnectedness and cheer, dance about the fabric. *Panther*, *Oyster*, *Blush* and *Junipher* are the four Elena colorways that anchor the collection.



83% post-consumer recycled polyester, 17% Nylon
Bleach cleanable
54" wide
Stain resistant finish
Repeat: 27" H x 28.75" V
Available in 4 colorways

1. *Blush*, ENA 6622
2. *Alabaster*, ENA 6621
3. *Panther*, ENA 6620
4. *Junipher*, ENA 6623

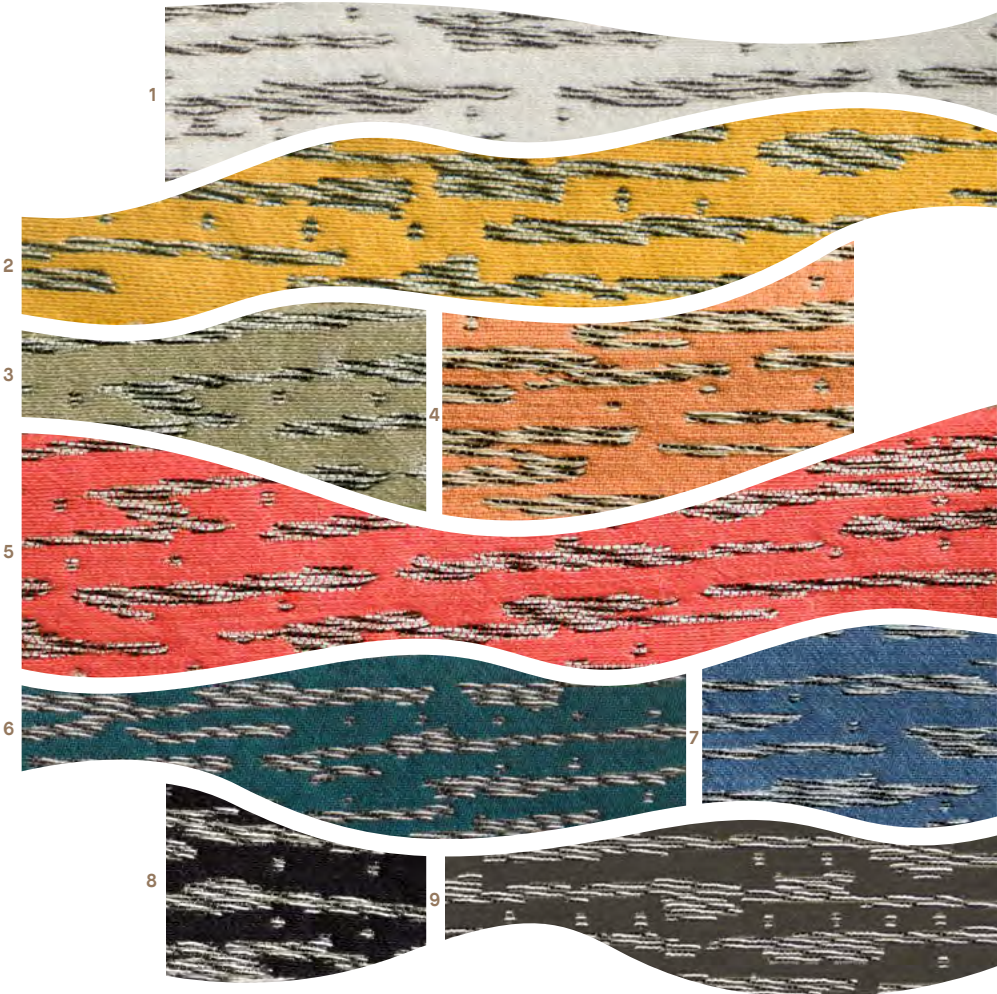




Armchair: Blush, ENA 6622 / Pillow: Panther, ENA 6620

Frida

Horizontal brushstrokes of black and white twisted yarns embody motion against a solid ground, and read as a dimensional texture from a distance. Nine colorways include contemporary water tones, *Blush*, upbeat *Crush*, sunny *Lionus*, and several neutrals.



57% Polyester (38% post-consumer recycled),
22% Acrylic, 21% Nylon
Bleach cleanable
54" wide
Stain resistant finish
Repeat: 9" H x 10.25" V
Available in 9 colorways



1. *Alabaster*, FDA 6611
2. *Lionus*, FDA 6614
3. *Mushroom*, FDA 6612
4. *Blush*, FDA 6610
5. *Crush*, FDA 6615
6. *Juniper*, FDA 6617
7. *Atmosphere*, FDA 6616
8. *Panther*, FDA 6618
9. *Pewther*, FDA 6613





Ottoman: Panther, FDA 6618 / Pillow: Alabasther, FDA 6611



“It was such a pleasure to create this collection with Wolf-Gordon and to create the perfect Muse for V Starr’s first product development collaboration. I am so happy and proud of the patterns and colors we have designed.”

—Venus Williams
Founder + CEO, V Starr



V Starr is a full-service hospitality, multifamily, and luxury residential interior design firm. High-profile clients such as Brookfield, Hilton, Curio by Hilton, Midtown Athletic Club and Hotel, JBG Smith, Millcreek, Toll Bros, InterContinental Hotels, among others, have turned to V Starr to successfully translate their vision into reality. The company, founded by professional tennis player Venus Williams in 2002, is based in West Palm Beach, Florida. For additional information, please visit www.vstarr.com.

WolfGordon 

800 347 0550
wolfgordon.com

Wolf-Gordon is an American design company dedicated to inspiring and enabling the creation of outstanding interiors. Founded in 1967 as a commercial wallcovering resource, the high performing product line now includes upholstery textiles, RAMPART® wall protection, paint, and Wink dry-erase surfaces.