

**Frank
Tjepkema**
Tjep.Cubism

Metamorphosis

Content: 61% Olefin, 39% Polyester
Backing: Acrylic
Width: 54"
Weight: 7.73 oz per linear yard
Repeat: 14.3" H x 14.22" V
Available in 10 colorways

Osmosis

Content: 100% Type II Vinyl
Backing: Nonwoven
Width: 52"–54"
Weight: 20 oz per linear yard
Repeat: 52" H x 22.25" V
Available in 9 colorways

Connections

Content: 100% Type II Vinyl
Backing: Cotton
Width: 52"–54"
Weight: 20 oz per linear yard
Repeat: 52" H x 22.25" V
Available in 12 colorways

Baroque

Repeat: 48" H x 22.25" V
Color, scale, and substrate are customizable.

**WALLCOVERING >>>>
METAMORPHOSIS, OSMOSIS,
CONNECTIONS, AND BAROQUE**

Metamorphosis textile wallcovering presents the process of structural development, from emptiness to form, and vice versa.

Osmosis wallcovering is a large-scale pattern that reveals the gradual process of transformation and assimilation of the cube, from 2-D to 3-D, and is enhanced by an ombré tone behind the primary pattern.

Connections wallcovering is a dense network of disconnected lines defining space and pattern.

Baroque digital print wallcovering is a study in cohabitation: a traditional damask and more contemporary, cube-based geometric in a single pattern. Tjep. has selected a Mylar substrate for Baroque.



Metamorphosis, METM 577



Osmosis, OSM 2652



Connections, CCT 2670



Baroque, DBRQ 300

TJEP.CUBISM

Wolf-Gordon Design Studio is delighted to present a collaboration with Frank Tjepkema that comprises four wallcoverings, an upholstery textile and a sheer drapery fabric. Titled "Tjep.Cubism", a playful reference to the early 20th century cultural movement, Czech Cubism, this collection features striking geometric patterns that are built off of an isometric representation of a cube. Tjep.Cubism debuted in April 2015 in Milan at the Spazio Rossana Orlandi, and in June 2015 at NeoCon®, Chicago.

Fragmentation

Content: 100% Trevira CS Polyester
Width: 123"
Weight: 7.8 oz. per linear yard
Repeat: 29.6" H x 43.9" V
Available in 5 Colorways

Basis

Content: 36% Solution-dyed Nylon,
33% Rayon, 31% Cotton
Backing: Acrylic
Width: 55"
Weight: 17.25 oz. per linear yard
Repeat: 14.25" H x 11.75" V
Available in 12 Colorways

DRAPERY



FRAGMENTATION

Fragmentation sheer drapery textile moves from a regular column of cubes to a scattered, light-filled array of the cube's planar components.

UPHOLSTERY

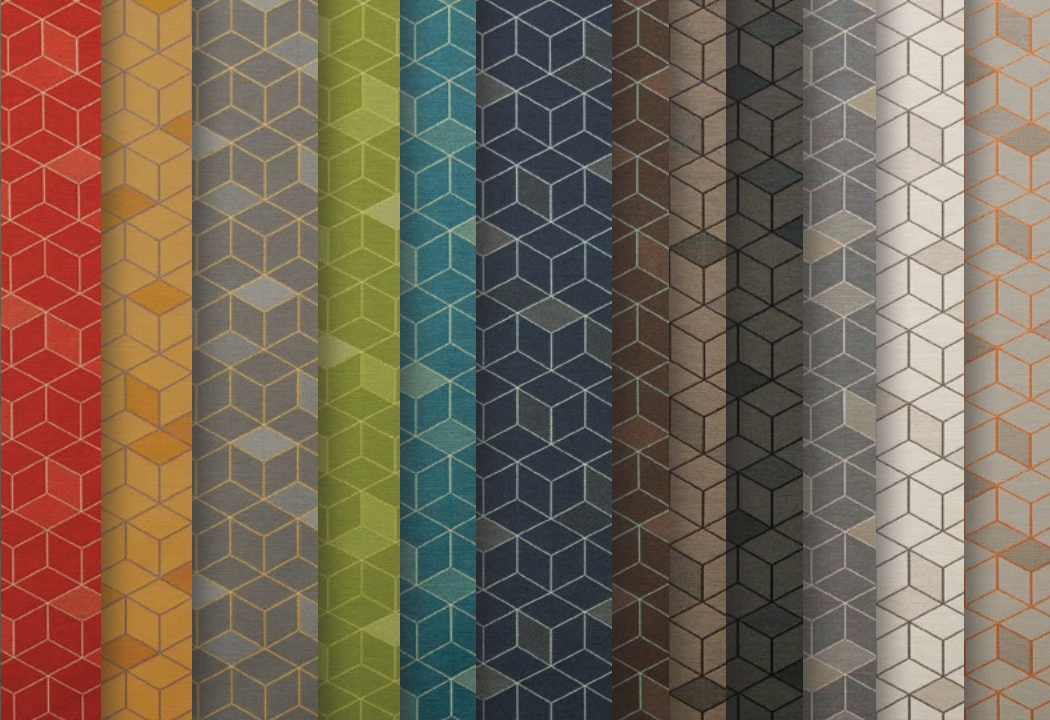


BASIS

Basis upholstery textile is the fundamental point of departure for the collection, repeated in a mosaic of colors and weave textures.



Fragmentation, FRAG 2000



Basis, BAI 1584



I chose the most fundamental architectural shape—the cube—as a starting point for the Wolf-Gordon collection. From there, my challenge was to add poetry, creativity, and dynamics to this most formal of architectural shapes. The patterns are an invitation to break away from formality and live to the fullest.

—FRANK TJEPKEMA

Frank Tjepkema is an award-winning designer based in Amsterdam whose work includes projects in interior, product, visual, and jewelry design. After obtaining degrees at the Design Academy Eindhoven, Netherlands and the Sandberg Instituut in Amsterdam, his work was selected for the Droog Design Collection. In addition to leading Tjep., his design studio, Tjepkema has completed a variety of conceptual art and exhibition pieces, including Bronze Age furniture, Bling Bling jewelry, and Light Bridge—an installation along the Amstel River in Amsterdam. His work can be found in galleries internationally, and is in the permanent collections of the Stedelijk Museum in Amsterdam, and the Museum of Arts and Design in New York.

WolfGordon 

800 347 0550
wolfgordon.com

Wolf-Gordon is an American design company founded in 1967 to offer designers a comprehensive source for all types of wallcoverings, united by the common qualities of excellent design and dependable performance. The product line includes wallcoverings, upholstery and drapery textiles, paints, and Wink clear, dry-erase coating. Wolf-Gordon sales representatives are based in all major markets in the United States.