

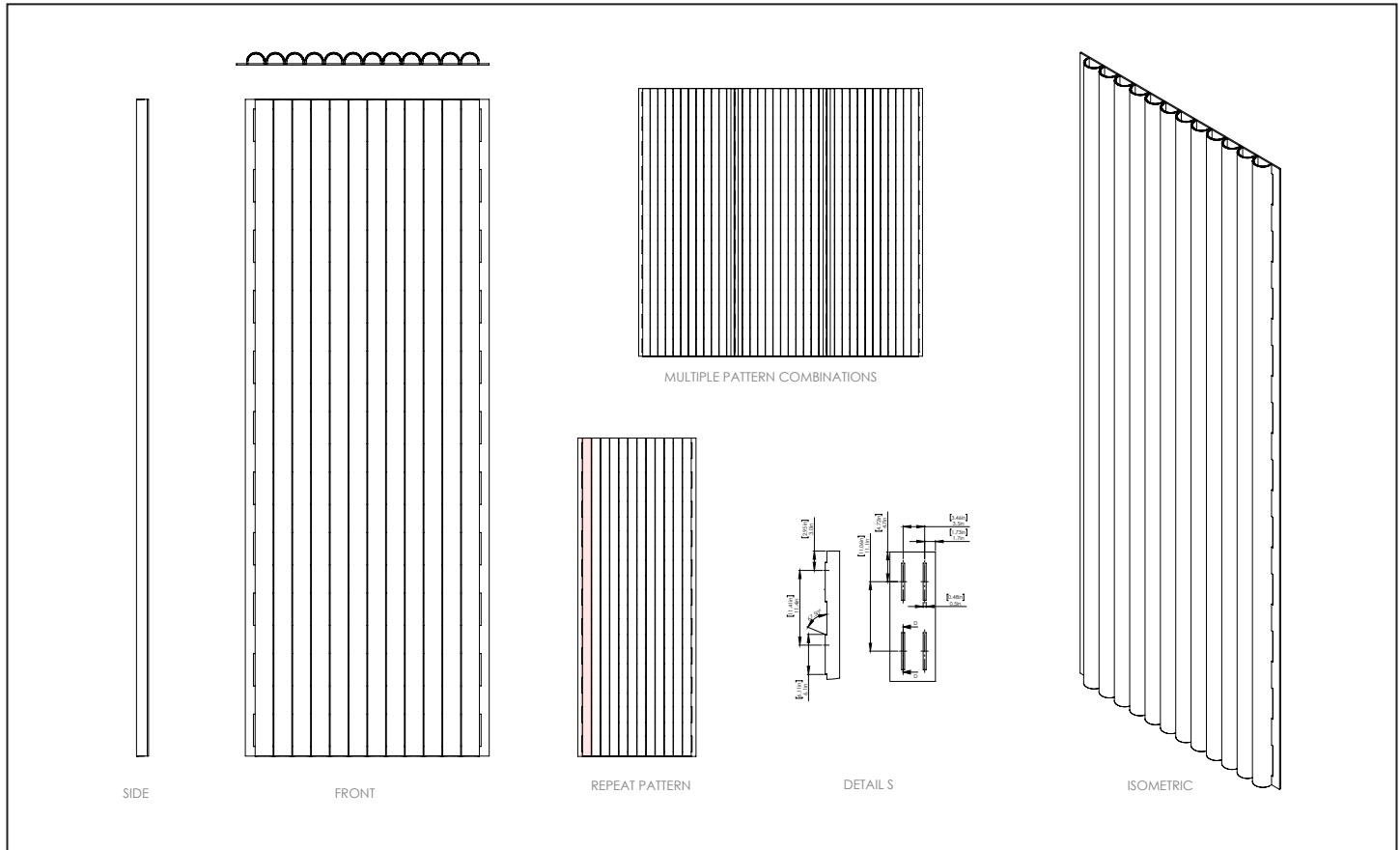
Columns Acoustical Panel

Installation and Maintenance Guidelines

GATHER
ACOUSTICAL

Dimensional: Folded

Installation for GATHER Acoustical panels is to be provided by a professional with extensive experience installing wallcovering, wall and ceiling-hung panels, and other Division 10 Specialty items.



BEFORE PLACING THE ORDER

The installer should review the site measurements and existing conditions—not just the architectural drawings—and determine the wall configuration, installation sequence, number of panels required, and necessary overage.

ONSITE PREPARATION AND PANEL INSPECTION

- GATHER Acoustical panels should be acclimated in the installation area for at least 48-72 hours prior to and after installing, at 60–80° F, with relative humidity at 50% or less. Verify that active moisture infiltration, condensation, and/or accumulation—particularly in warm, humid climates—is not present. If walls show mold, mildew, or visible moisture damage, or if moisture content exceeds recommendations, do not proceed with installation until the condition has been fully corrected under the direction of a qualified professional. *Wolf-Gordon will not be responsible for any performance or quality issues if moisture problems are not addressed before or following installation.*
- Examine each individual panel and module carefully to ensure that the material, design, color, and quality are satisfactory and as ordered. Note: Modules are shipped flat, to be assembled by installer. Check that the quantity and dimensions match the required specifications, prior to cutting. *In the event any discrepancies are found, STOP and contact Wolf-Gordon Customer Service at 212-255-3300, before proceeding.*
- Wall size, panel size, and desired layout should be considered during wall configuration to determine the installation sequence and whether to start with a panel at the center line or start directionally from the corner.

- **Check the number of folding insert modules compared to the number of slots in the backing panel.** *If the number of modules is less than the number of matching insert slots, please contact Wolf-Gordon Customer Service.*
- **Check that you have the cuts and scores on the insert modules positioned on the correct side.** Confirm the face, back, and insert orientation of the modules against the provided detail drawings.
- **On the backing panel, check that the slot insert pieces have all been removed.***
- **A staging area is recommended for checking the layout.** Lay out the panels in the space before cutting or making adjustments to ensure pattern matching, pattern direction, and alignment are according to product information. Refer to the panel drawings for direction.
- After being laid out for inspection, **product defects and damage from transit must be reported within 24 hours.**

* Refer to the last bullet point listed under "Installation" for slot pieces you might not want to remove.

SURFACE PREPARATION

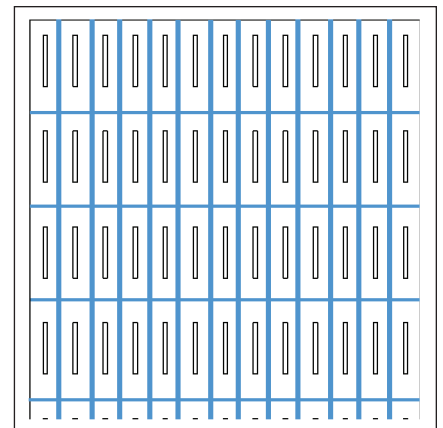
- **Inspect existing wall surfaces** to ensure they are clean, dry, structurally sound, and free of dirt, grease, and markings. If an oil-based primer was used, apply an acrylic or latex primer over it before hanging the panels to avoid trapping moisture or adhesion problems. If the surface does not have a uniform color, use a pigmented primer.
- Existing walls present varied conditions, but **all walls should be finished to at least a Level 4** (preferably, Level 5) finish. Glossy surfaces should be sanded and mildew should be cleaned from the surface with a solution of two cups of household bleach per gallon of water.
- **Check walls for conditions and obstructions** where panels may have to be cut, trimmed, or adjusted.

RECOMMENDED TOOLS AND EQUIPMENT

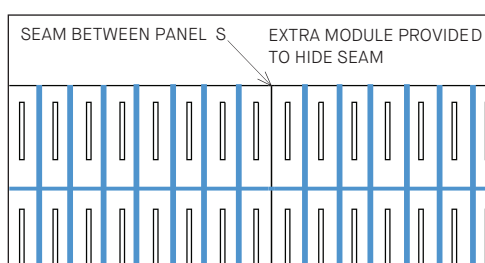
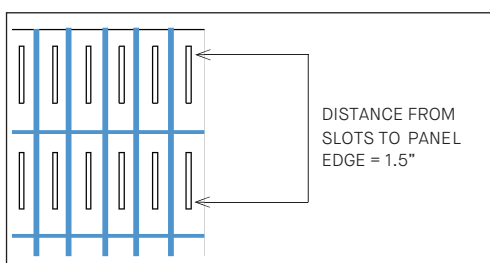
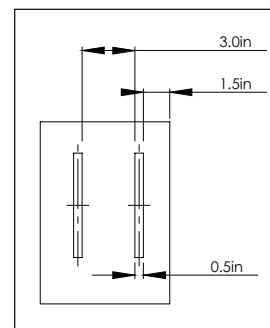
- Direct adhesive (Liquid Nails® LN710 or LN2000, Loctite®, or DAP® products)
- Heavy-duty utility knife
- Heavy-duty circle cutter (Olfa® or equivalent)
- 4' non-slip straightedge with 90 degree angle
- Cross-line laser level (preferably with tripod attachment)
- 4'–6' ladder
- X-acto® knife and blades—for detail cutting, if necessary

INSTALLATION

- **Check the panel layout** to ensure proper placement and pattern match.
- **Double-check that the number of folding modules match the available slots in the backing panel.**
- With confirmed wall configuration, **plumb lines should be established before final installation.** Installation of full widths of material is recommended.
- For conditions where corners of walls, ceilings, or floors are not plumb, **scribe each panel to fit the corner condition.**
- **Panels should be trimmed according to the final wall configuration,** using a heavy-duty utility knife. Fine trimming and/or cuts for protrusions can be cut with X-acto blades.
- Once panels have been checked, sized, and trimmed to fit the wall, **a direct adhesive can be applied to the BACK SIDE of a base panel.** The face side of the panel is where the insert slots appear flat; the angle of the insert slots can be seen on the back side. Take care to prevent the adhesive from getting on the panel face. Recommended adhesives indicated above. Do not use solvent-based adhesives.
- **Apply adhesive in rows and columns in between insert slots (see illustration above).** Do not apply adhesive across insert slots. A bead of adhesive should be approximately 1/4", and get no closer than approx. 2" from the panel perimeter, to prevent spillage.
- **The base panel should be installed onto the wall before inserting modules,** within 15–20 min of adhesive application.
- **Wait for the base panel adhesive to be fully set before attempting to apply the folding insert modules.** Attempting to apply the modules before the base panel is set could result in the panel shifting and incorrect overall alignment.



- To assist in having the folding modules adhere to the back panel, **apply a thin bead to the inside face of each insert slot.** This should be done one column at a time, starting from one side, with the next part sharing the insert slot. The folding modules should be attached within 15–20 minutes after adhesive is applied to ensure modules can be shifted to fit.
- When attaching modules, **ensure that there is friction with the slots and with the adjacent column,** and that each column has a proper fit with the middle slot.
- **For matching seam to continue pattern, set base panel next to the previous one.** When set next to each other, the space between the slots at each end of the base panel is equal to the regular distance between insert slots. This allows a folded module to cover the seam between base panels.
- **For instances where a wall corner condition prevents a full column of folding modules, do not install the last column.** Instead, keep the slot pieces in place (see illustration) and use the remaining portion of the base panel as a “filler” strip that extends to the corner of the wall.



CARE AND MAINTENANCE

GATHER Acoustical panels are composed of recycled polyester, a hydrophobic thermoplastic whose composition makes it naturally stain and water-resistant, allowing for time for spills to be blotted with a damp cloth. Spills should be addressed quickly and with care.

- All cleaning attempts should be done on an inconspicuous portion of a panel first, before being applied to stained or soiled areas.
- **Using stringent or solvent-based cleaning agents can potentially damage the finish and colorfastness.**
- First-step cleaning should be with a lint roller or dry brush using light consistent strokes on the affected area.
- Lightly blot stains and spills with a slightly damp towel using a press-and-release action
- If a cleaning agent must be used for mild stains, an enzyme-based cleaning agent is recommended, using a 3:1 water-to-cleaning agent ratio. Blot the area with a clean cloth or paper towel until dry. Then go over the area lightly with a dry brush.
- For emergency cleaning, blot the area with a cloth lightly dampened with a solvent-based solution, dry cleaning solution, or chemical spot removal. After blotting the affected area, blot with a clean cloth until the area is dry.

Note: The information above is intended only as a guideline. The installer has the final responsibility for proper installation and evaluation of jobsite conditions.